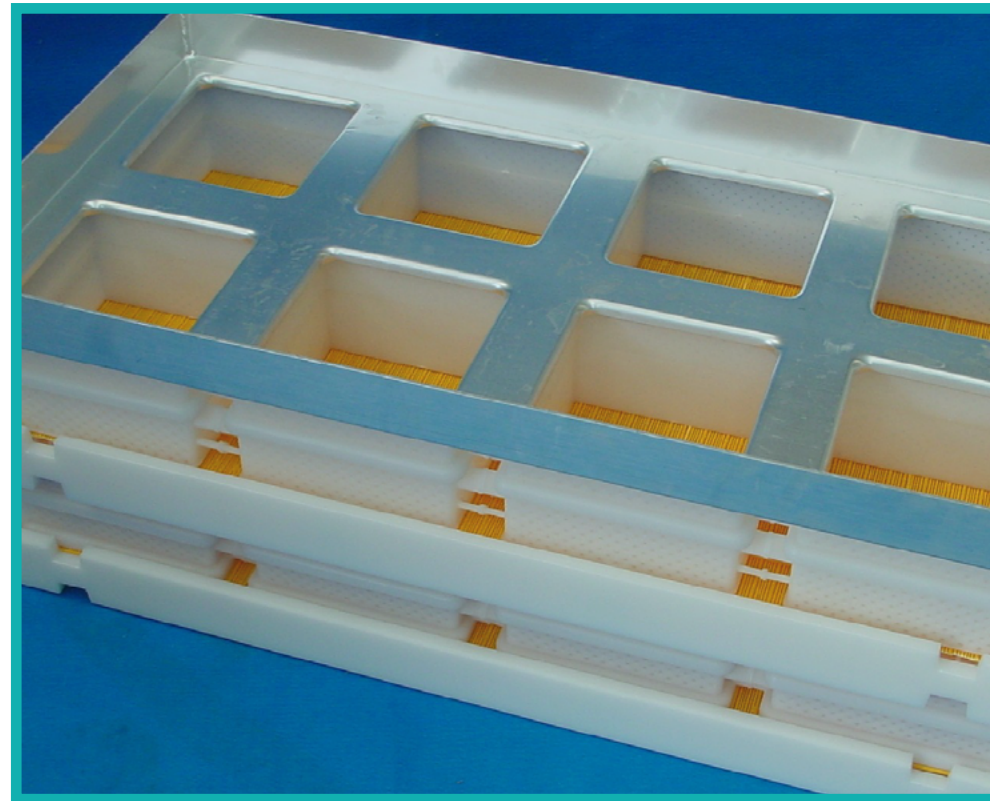
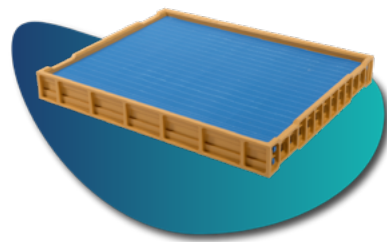
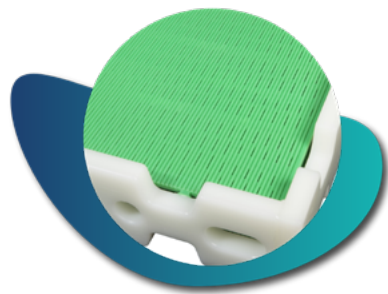
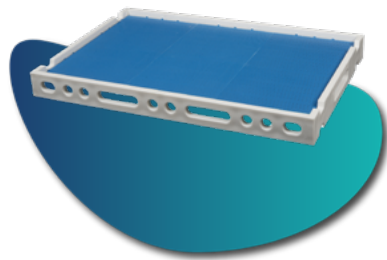




# SERVI DORYL

CHEESE MOULDS EXPERT

## DOUBLE-SIDED PLASTIC DRAINING TRAYS



Developed by Servi Doryl since 1993 to mechanise and secure the turning of cheese in stack, the double-sided plastic draining trays **can replace stainless steel and aluminium trays.**

They work for all cheese shapes and **can be adapted to mechanised lines.**



### • Double-sided trays equipped with draining mats

- Multifomat trays with integrated mats
- Dedicated trays

Moulding and draining of cheeses in moulds, block-moulds of all shapes



- 500 x 622 mm internal
- 500 x 652 mm internal
- 469 x 718.5 mm internal
- 469 x 958 mm internal
- Other dimensions on request



### Injected or boiled copolymer polypropylene parts

## BENEFITS :

- Lightweight and easy to use trays
- Excellent product durability
- Fast return on investment
- Channelled whey flow
- Good ventilation on all the surfaces of the cheese
- Possible to turn in stacks or individually
- Safe movement on mechanised chains
- Recyclable plastic materials, controlled recycling circuits
- Possibility to take back trays at the end of their life
- Reduction of the environmental footprint

**Contact us to discuss your project !**

